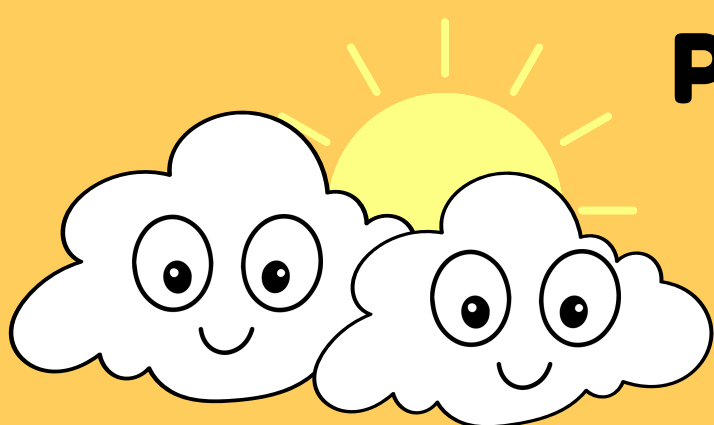


# TYPES OF WEATHER



## PARTLY SUNNY

Partly sunny is when there are clouds in the sky but you get pop of sun



## SUN SHOWERS

Sun Showers are when it is raining but the sun is out. A rainbow can appear after a sun shower.



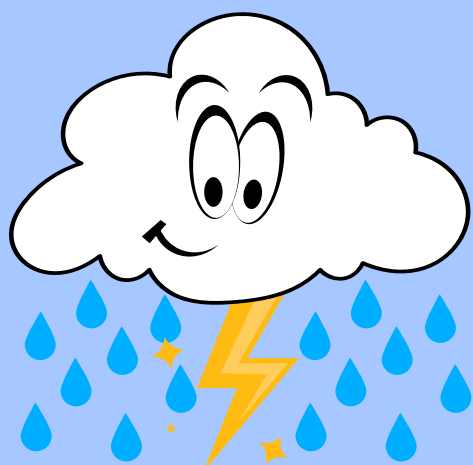
## WINDY

Wind is caused when there is a big difference between high and low air pressure systems.



## SNOWY

Snow occurs when water vapor freezes, forming ice crystals called snowflakes.



## STORMY

Storms occur when cool air meets warm air. Lightning is electricity within clouds



## CLOUDY

It's a cloudy day when clouds are covering the sky and you cannot see the sun.